

PRICES

Framery Price Book

In SEK



VAT 0%
EXW Tampere (Incoterms 2010)

Prices effective January 1, 2023
Published November 18, 2022

framery

Framery One

	Framery One		Framery One Premium	
	137,693	SEK	154,275	SEK
Exterior				
Exterior panel option color	6,064	SEK	✓	
Interior				
Height adjustable table	✓		✓	
Height adjustable seat	11,715	SEK	✓	
Interior panel option color	6,064	SEK	✓	
Table top option color (Black anti-fingerprint / Oak veneer)	2,021	SEK	✓	
Seat upholstery option color	1,031	SEK	✓	
Carpet option color	1,031	SEK	✓	
Functionalities				
UI Panel, including 4G connection	✓		✓	
Video conference light	✓		✓	
Occupancy indicator	✓		✓	
Activated carbon filter	2,681	SEK	✓	
Wireless charger	2,846	SEK	2,846	SEK
LAN port (Includes LAN cable)	1,031	SEK	1,031	SEK
Movability kit	3,135	SEK	3,135	SEK
*Service kit	5,033	SEK	5,033	SEK

*Service kit Includes all the necessary tools to install Framery One.

✓ Included

Toolkit

- 8mm, 10mm, 12mm wrenches
- 10mm flat, TX10, TX20, TX30, TX45 screw heads
- Magnetic screwdriver
- Hex key set (incl. 2, 2.5, 3, 4, 5, 6, 8mm hex keys)
- Spirit level 400mm
- Scissors
- Plastic chisel
- Working gloves x2
- Glass & overall cleaning spray x2
- Microfiber cloth

Roof lifting support to ensure safe roof installation



Framery One

Framery One is a highly adaptable workspace for one person. The leading sound insulation standards and echo-free acoustics keep you free from outside noise or distractions. Industry leading ventilation speeds ensure the highest air quality inside the pod, keeping you fresh and focused. Adjustable lighting from the ceiling light and front-facing video conferencing light lets you set your preferred atmosphere for video meetings, focus work, or any other uses. The height-adjustable table provides a generous working space, large enough for all of your devices and any other personal items. A height-adjustable seat is available as an option.



Framery One Premium

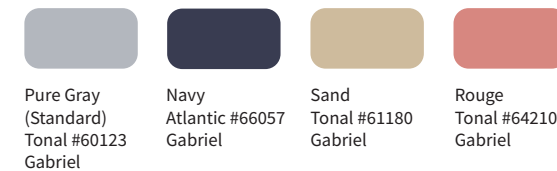
Get the most out of Framery One with Premium package. Framery One's impressive exterior comes in a range of Framery colors, while our design team have created a range of interior panel fabrics, carpet, seats and tables, so you can adapt the pod to suit your company style. And – if you need a super flexible solution – just add wheels. Both the seat and generous table are designed to be easy to adjust, with footrests on the floor and fixed to the seat to keep you comfortable for long stretches. Activated carbon filter ensures the air inside the pod is always fresh, clean and free of odours.

Colors

Exterior



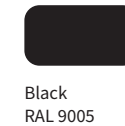
Interior panels



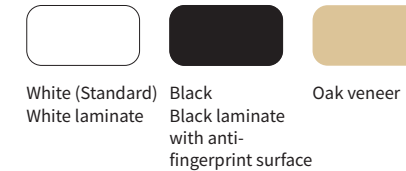
Carpet



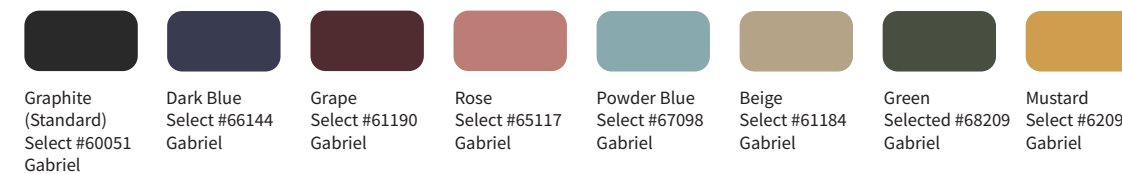
Frame



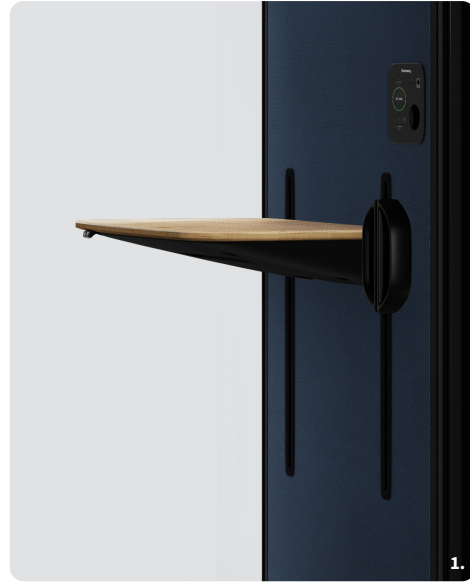
Table



Seat Fabrics



Furniture



1. Height-adjustable table

The height adjustable table provides comfort for all users. The table can be adjusted vertically between 74 – 116 cm (29.1 – 45.7 in). The ample surface of the table (76 cm width & 46 cm depth/ 30 in x 18 in) provides space for laptops, personal devices and other work tools.

2. Height-adjustable seat

The height adjustable seat has two footrests for comfortable working. The height can be adjusted vertically between 59 cm - 85 cm (23.2 in x 33.5 in).

Certificates



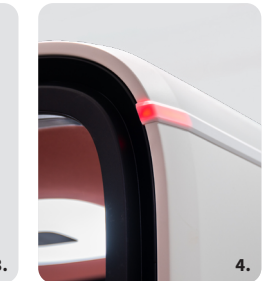
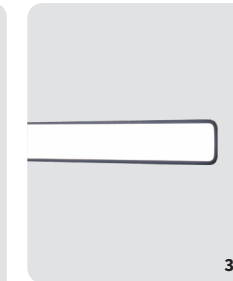
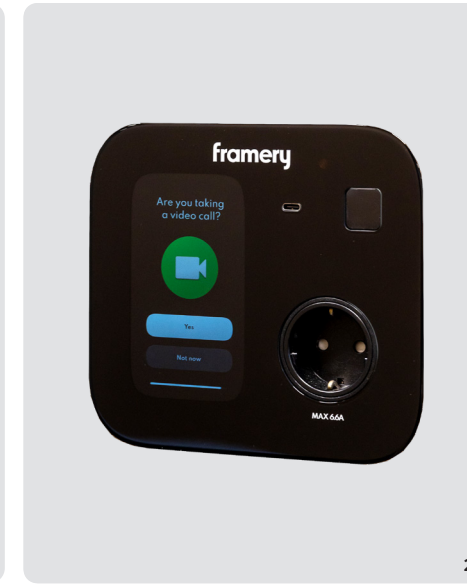
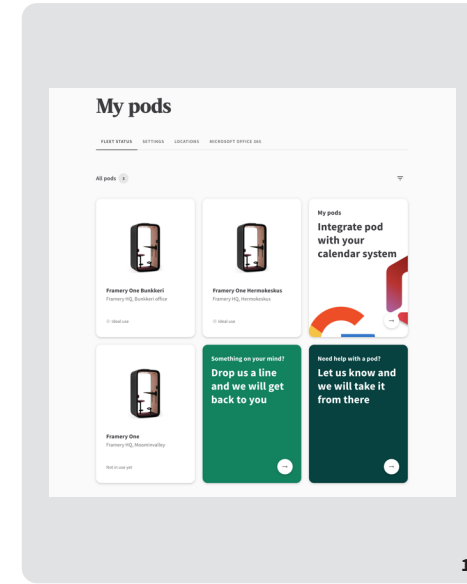
Framery One is UL GREENGUARD GOLD certified



Framery O, Q, 2Q and One shipped in North America are UL 962 listed



Optional functionalities



Always included

- 1. Framery Connect** Sign up to Framery Connect, our revolutionary digital service, to make sure you always have the best possible version of Framery One. Enable future software updates by activating your Framery One in Framery Connect. Check the pod's availability and make reservations through Google and Microsoft calendar systems with the **Bookable Pods** functionality. When vacant, the pod can also create an automatic calendar reservation upon entry. You can also extend your current reservation with the touch of a button directly to the UI Panel. And stay up to date with all upcoming features from Framery Connect!
- 2. UI Panel** From the UI Panel, you can adjust the pod's lighting and ventilation according to your personal preferences. Choose from Work Mode or Video Mode lighting presets, or control the brightness of both lights individually. The integrated 4G module enables to see the pod's availability, and make reservations directly with the **Bookable Pods** functionality on the touchscreen. Charge your devices via power outlets (1 power socket, USB C socket, optional LAN) located on the UI Panel.

- 3. Video conference light** A dimmable LED panel embedded into the tech wall of Framery One improves the experience of video calls. Warm light is cast on the user's face in a wide spread with excellent color rendering capacity (90CRI), providing excellent illumination without bothering the user. The 4000K color temperature guarantees a natural look and feel with optimal user comfort. Adjustments to both the video conference light and the ceiling light can be made easily via the UI Panel.

- 4. Occupancy indicator** Stepping into the pod, Framery One's occupancy indicator will display a red light with 360° visibility to let the office know the pod is in use.

Optional functionalities

- 5. Activated carbon filter** Keep the air inside Framery One extra fresh and clean and free of odors with an activated carbon filter. The filter removes pollutants from the air with an adsorption process.

- 6. Wireless charger** charge your phone fast and wire-free inside our pods! The charger itself is located underneath the table, with a sticker on top of the table indicating where to place your phone to get it charged.

- 7. LAN Port** It is possible to add a LAN Port to the UI Panel. This option includes a LAN cable.

- 8. Movability kit** Framery One can be easily relocated without disassembly by lifting the levelling feet up and thus lowering the pod onto its wheels. The high load capacity polyurethane castor wheels are both durable and pliable. Number of wheels: 4.

Framery O

	Quick Call		Standard		Color	
	101,805	SEK	111,953	SEK	127,463	SEK

Exterior

Ultra matt option color exterior	5,775	SEK	5,775	SEK	✓
Option color door and frames	8,168	SEK	8,168	SEK	✓

Interior

Tovi stool	9,364	SEK	✓	✓		
Tovi stool with option fabric	10,890	SEK	1,526	SEK	✓	
Regular table with black anti-fingerprint laminate	2,186	SEK	2,186	SEK	✓	
Wide table with white laminate	2,929	SEK	2,929	SEK	2,929	SEK
Wide table with black anti-fingerprint laminate	4,785	SEK	4,785	SEK	2,929	SEK

Functionalities

Power outlet with USB-C+A	2,640	SEK	✓	✓		
Movability kit	2,970	SEK	2,970	SEK	2,970	SEK
Self-closing hinges (white or black)	3,176	SEK	3,176	SEK	3,176	SEK
Wireless charger (for Wide table)	2,723	SEK	2,723	SEK	2,723	SEK
Electromechanical code lock handle	3,506	SEK	3,506	SEK	3,506	SEK
Smart Lock Compatible	5,404	SEK	5,404	SEK	5,404	SEK
Copper-plated door handle	743	SEK	743	SEK	743	SEK
LAN cable 7 m	990	SEK	990	SEK	990	SEK

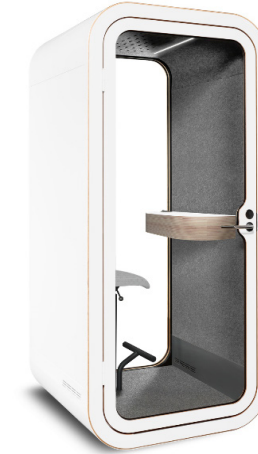
Framery O is available with left-handed door only.

✓ Included - Not available



Framery O Quick Call

Quick Call package has the basic features of a single-person pod that are needed for having a private phone call without disturbing your colleagues. In addition to superior sound insulation, it has a white high-pressure laminated table, acoustic interior felt, anti-static carpet, occupancy sensor, LED lighting and power outlet. Seat not included.



Framery O Standard

Standard package expands the use of a single-person pod to also include heads-down work. In addition to all the basic features of Framery O, it has a fixed height-adjustable Tovi stool and power outlet with USB-C+A.

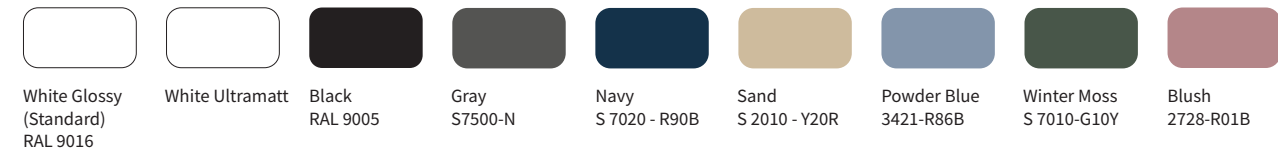


Framery O Color

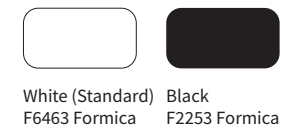
Color package includes all the color options available for Framery O making it an affordable way to fully personalize the pod. Option color seat fabric, exterior covers, door and door frame and table.

Colors

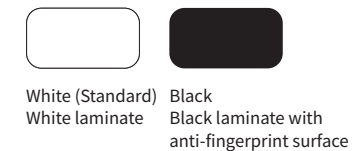
Exterior



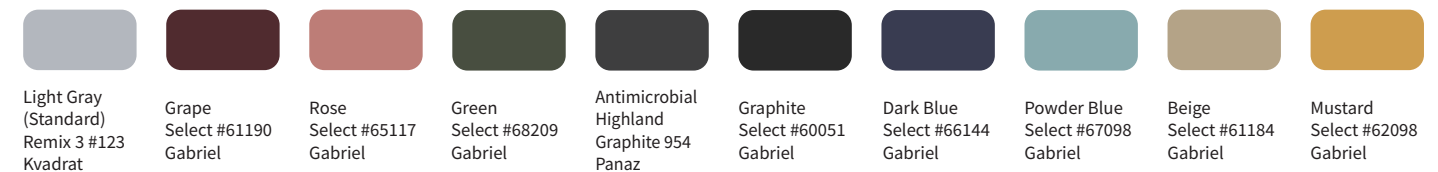
Frame



Table



Seat fabrics



Furniture



1.

1. Tovi Stool

Put your laptop on the table, sit comfortably on the Tovi stool and do your thing. Height adjustability ensures that the stool accommodates all users. The stool is attached to the pod with a robust fixing plate making it stable and durable. The color of the seat can be customized.



2.

2. Regular table

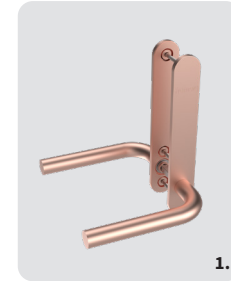
Tables of Framery O are designed to provide space for a laptop, a notebook and a mobile phone. They provide power for charging your devices while working or taking part in a call. There are two table options: regular and wide.



3.

3. Wide table

Optional functionalities



1.



2.



5.

1. Copper-plated door handle Copper has been used for health purposes since ancient times. According to a study by Centers for Disease Control and Prevention (CDC), viruses disintegrate quicker after landing on copper surfaces than on plastic or stainless steel surfaces. Compatible with all configurations of Framery O. Option includes copper-plated door handle.

2. Smart Lock Compatible is a kit of parts that allows customer selected smart lock and key to be installed. Compatible with all configurations of Framery O. Option includes kit shown in picture. Smart lock itself is acquired by the customer.



3.

3. Code handle can be used to limit access to a pod only for users with a number code.

4. Self-closing hinges (white or black) can be used to limit the opening of doors and to make sure that they are not blocking passageways.

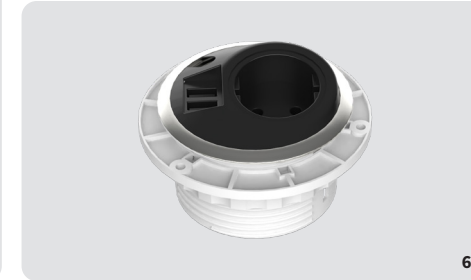
5. Wireless charger charge your phone fast and wire-free inside our pods! The charger itself is located underneath the table, with a sticker on top of the table indicating where to place your phone to get it charged.



4.

6. Power options include outlets with or without two charging USB-C+A sockets and a LAN cable lead-through. Wireless charging is also available.

7. Movability kit Relocating your Framery pod has never been this easy! Movability kit for Framery O includes six castors to make it easier to move the pod.



6.



7.

Certificates



Framery O, Q and 2Q are UL GREENGUARD certified



ISO 9001 BUREAU VERITAS Certification



ISO 14001 BUREAU VERITAS Certification



c UL US

Framery O, Q, 2Q and One shipped in North America are UL 962 listed



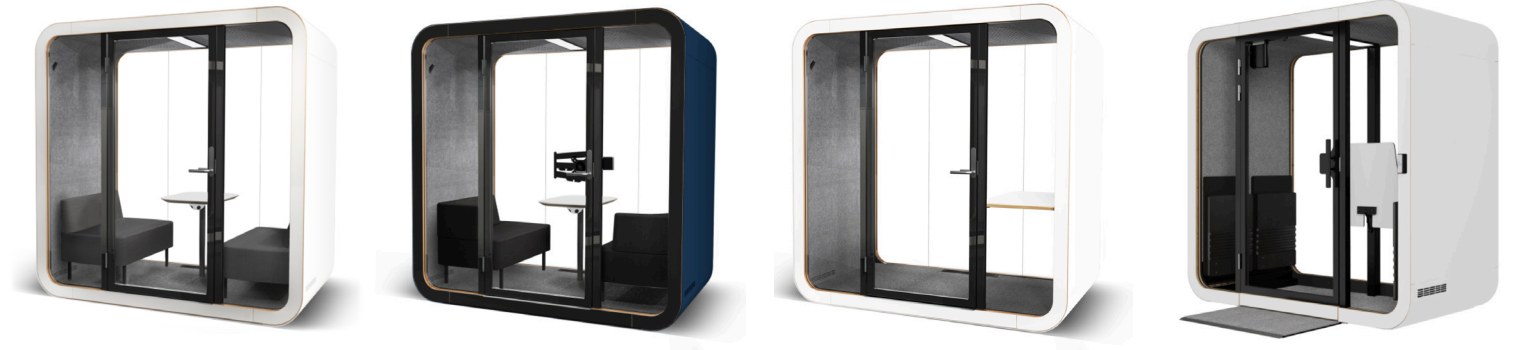
Framery Q

	Meeting Maggie		Meeting Maggie Premium		Flow		Flip n' Fold	
Exterior	248,078	SEK	280,500	SEK	230,918	SEK	347,078	SEK
Standard exterior color White Glossy	✓		✓		✓		✓	
Option exterior color	6,806	SEK	✓		6,806	SEK	6,806	SEK
Standard frame color white	✓		✓		✓		✓	
Option frame color	11,096	SEK	✓		11,096	SEK	11,096	SEK

Interior								
Maggie sofas with armrest	✓		✓		–		–	
Maggie sofas with straight backrest	✓		✓		–		–	
Standard fabric (sofa)	✓		✓		–		–	
Option fabric (sofa)	4,826	SEK	✓		–		–	
Turnable table with white laminate	✓		✓		–		–	
Turnable table with black anti-fingerprint laminate	3,218	SEK	✓		–		–	

Functionalities								
Screen bracket	5,816	SEK	✓		–		–	
Turnable monitor arm	6,971	SEK	✓		–		–	
Control panel for ventilation and lighting	6,600	SEK	✓		6,600	SEK	–	
Movability kit	5,816	SEK	5,816	SEK	5,816	SEK	–	
Booking bracket	2,351	SEK	2,351	SEK	2,351	SEK	–	
Self-closing hinges	3,176	SEK	3,176	SEK	3,176	SEK	–	
Wireless charger	2,764	SEK	2,764	SEK	–		–	
Smart Lock Compatible	5,486	SEK	5,486	SEK	5,486	SEK	–	
Copper-plated door handle	743	SEK	743	SEK	743	SEK	–	
Data cartridge for Power outlet (includes two LAN cables)	3,465	SEK	3,465	SEK	3,465	SEK	–	

✓ Included – Not available



Framery Q Meeting Maggie
Comfortable privacy for longer meetings
 Suitable for meetings, brainstorming, gathering face-to-face, getting work done, and much more. Meeting Maggie comes with pleasant LED lighting and two power sockets. Two Maggie sofas with curved or straight backrest and a turnable table are always included.

Framery Q Meeting Maggie Premium
For shared videoconferences
 This soundproof, hybrid meeting space can be used by 1-4 people, both in-person and online. A Screen bracket and turnable monitor arm makes the layout ideal for videoconferencing, and adjustable lighting & ventilation makes the meeting experience even better. Two Maggie sofas are always included, and you can choose between curved or straight backrest.

Framery Q Flow
For heads-down work
 The Framery Q Flow interior layout is designed for uninterrupted heads-down work. It comes with an adjustable electric table that allows you to change your working position from sit-to-stand in a matter of seconds. The Flow has plenty of space inside for a chair and even an extra stool, making it possible to invite your colleague in for a chat or a shared video conference.

Framery Q Flip n' Fold
For easy access
 The Framery Q Flip n' Fold is a convenient and flexible fully-accessible interior meeting space. Easily accessible with a wheelchair, the low doorstep, automatic door opener, and folding chairs and table enable many different meeting arrangements. Automatic air ventilation creates a fresh and comfortable working environment. The product is easy to assemble and relocate when necessary.

Colors

Exterior

White Glossy (Standard) RAL 9016	White Ultramatt	Black RAL 9005	Gray S7500-N	Navy S 7020 - R90B	Sand S 2010 - Y20R	Powder Blue 3421-R86B	Winter Moss S 7010-G10Y	Blush 2728-R01B

Frame

White (Standard) F6463 Formica	Black F2253 Formica

Table

White (Standard) White laminate	Black Black laminate with anti-fingerprint surface

Seat fabrics

Maggie Gray (Standard) Canvas #154 Kvadrat	Grape Select #61190 Gabriel	Rose Select #65117 Gabriel	Green Select #68209 Gabriel	Antimicrobial Highland Graphite 954 Panaz	Graphite Select #60051 Gabriel	Dark Blue Select #66144 Gabriel	Powder Blue Select #67098 Gabriel	Beige Select #61184 Gabriel	Mustard Select #62098 Gabriel

Furniture



1.

1. Meeting Maggie

Turnable table allows something to be shown from a laptop and leaves room for entering and exiting the pod. Maggie sofas are available in different backrest configurations and with or without armrests.



2.



3.

2. and 3. Two sofa options

Turnable table allows something to be shown from a laptop and leaves room for entering and exiting the pod. Maggie sofas are available in different backrest configurations and with or without armrests.



4.

4. Flip n' Fold

Four foldable seats are included in the Framery Q Flip n' Fold pod, together with a foldable table for maximum accessibility.

Certificates



Framery Q, Q and 2Q are UL GREENGUARD certified



Framery Q, Q, 2Q and One shipped in North America are UL 962 listed



Optional functionalities



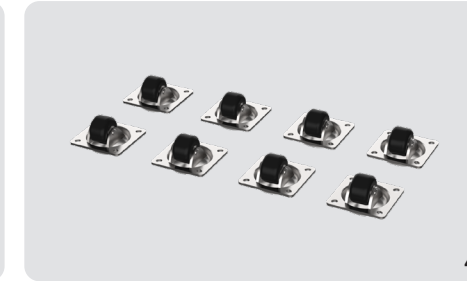
1.



2.



3.



4.



5.



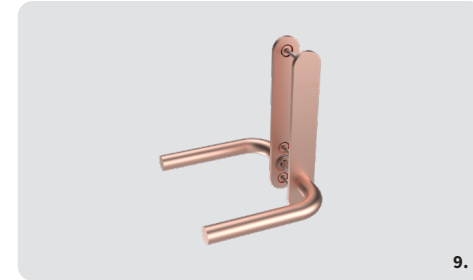
6.



7.



8.



9.



10.



11.

1. Screen bracket is in the center of the back glass and can be fitted with a maximum 27" display with VESA 75 X 75 or 100 X 100 mounting. Compatible with Framery Q Meeting Maggie. By having a screen bracket you can extend the use cases within the pod being able to use display for presentations / hybrid meetings. Option includes screen bracket, display acquired by the customer.

2. A turnable monitor arm allows two users to sit on one side of a Framery, turn display towards them, and both be visible on a camera mounted on it. Compatible with Framery Q Meeting Maggie. Screen bracket is included when selecting turnable monitor arm as an option. Display and camera acquired by the customer.

3. Control Panel for ventilation and lighting With this control panel you can adjust ventilation and lighting inside the pod. Compatible with Framery Q Meeting Maggie and Flow. Control panel is a useful option as number of persons and/or use cases within larger pods may vary. It is installed on doorwall frame. Option includes the control panel and required wires.

4. Movability kit Flexibility of offices is an important factor, and location of the pod may change. With movability kit relocating your Framery pod has never been this easy. Compatible with Framery Q Meeting Maggie and Flow. Option includes eight castors and fasteners that can be installed to the bottom of the pod.

5. Booking bracket is a universal booking tablet bracket with a plywood surface attached to the door locking plate. Two sizes available to fit your device. Option includes the bracket and kit required for attachment. Customer acquires the booking tablet and cover for it which is mounted to the bracket.

6. Self-closing hinges can be used to make sure the door is not blocking passageways. Self-closing hinges are a type of hinge that has a spring built into it. Available for both left-handed and right-handed door. Compatible with Framery Q Meeting Maggie and Flow. Option includes set of black hinges for the door.

7. Wireless charger Charge your phone wire-free inside your pod. The charger itself is located underneath the table, with a sticker on top of the table indicating where to place your phone to get it charged. Compatible for Framery Q Meeting Maggie and Flow. Option includes the charger, required wires and the sticker.

8. Smart Lock Compatible is a kit of parts that allows customer selected smart lock and key to be installed. Compatible with Framery Q Meeting Maggie and Flow. Option includes kit shown in picture. Smart lock itself is acquired by the customer.

9. Copper-plated door handle Copper has been used for health purposes since ancient times. According to a study by Centers for Disease Control and Prevention (CDC), viruses disintegrate quicker after landing on copper surfaces than on plastic or stainless steel surfaces. Compatible with Framery Q Meeting Maggie and Flow. Option includes copper-plated door handle.

10. Data cartridge for Power outlet Power outlet has two power and two charging USB (C+A) sockets as standard. Data cartridge is attached during installation to power outlet located underneath the table. Compatible with Framery Meeting Maggie and Flow. Option includes a data cartridge with two LAN ports, two LAN cables and wireless charging.

11. Anti-microbial, non-toxic polyester fabric Anti-microbial, waterproof, bleach cleanable, stain resistant and durable polyester fabric. Our non-toxic material is safe and ISO 10993-5:2009 tested. Compatible with Framery Q Meeting Maggie.

Framery 2Q

	Huddle		Lounge		Without Furniture	
	364,155	SEK	427,845	SEK	347,078	SEK

Exterior						
Standard exterior color White Glossy	✓		✓		✓	
Option exterior color	7,755	SEK	7,755	SEK	7,755	SEK
Standard frame color white	✓		✓		✓	
Option frame color	11,096	SEK	11,096	SEK	11,096	SEK

Interior						
72cm table	✓		–		–	
110cm table	1,114	SEK	–		–	
Piaggio table	–		✓		2,558	SEK
Standard fabric (Lounge, Clint sofa)	–		✓		–	
Option fabric (Lounge, Clint sofa)	–		11,096	SEK	–	

Functionalities						
Control panel for ventilation and lighting	✓		✓		✓	
Self-closing hinges	✓		✓		✓	
Screen bracket	✓		3,506	SEK	3,506	SEK
Whiteboard	25,451	SEK	✓		2,5451	SEK
Booking bracket	2,351	SEK	2,351	SEK	2,351	SEK
Smart Lock Compatible	5,486	SEK	5,486	SEK	5,486	SEK
Copper-plated door handle	743	SEK	743	SEK	743	SEK
LAN port (includes LAN cable) *	3,465	SEK	3,465	SEK	3,465	SEK
LAN cable 7m	990	SEK	990	SEK	990	SEK

* Data cartridge for Lounge (includes two LAN cables)

Framery 2Q is available with left-handed door only.

✓ Included – Not available



Framery 2Q Huddle

Huddle up for your next team meeting!

Framery 2Q Huddle is an ideal setup for your meetings, whether everyone attending is present or some are joining remotely. Gather your team of four around a spacious table where everyone fits comfortably, laptops included! The spacious pod allows you to bring in two extra chairs and everyone to move around freely. Optimize your meetings with a screen bracket and whiteboard set on the opposite wall to ensure that everyone present, physically or virtually, shares the same vision.



Framery 2Q Lounge

Living room in your office

Framery 2Q Lounge variation provides a more casual environment for company meetings, a calm space to retreat to during the work day, or an area for socialization. Custom-designed Clint Sofa, large whiteboard, free-standing Piaggio table and a wall shelf make up for a functional yet relaxed setting. Additional options include a display bracket on the wall for a TV or a booking system ready option for the door.



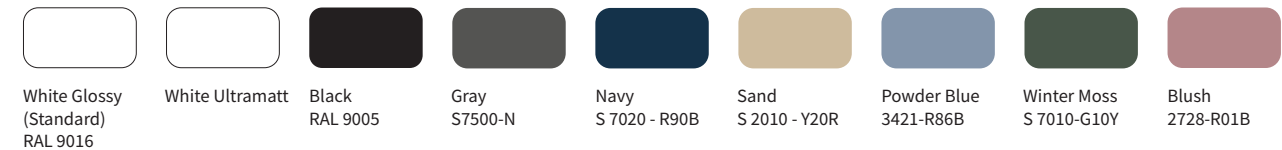
Framery 2Q Without Furniture

Have it in your style

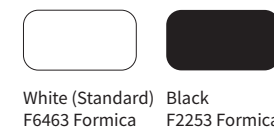
You can choose the Framery 2Q meeting pod without furniture, leaving you the option to furnish it the way you like. The superb sound insulation ensures you and your team total sound privacy and the adjustable airflow creates a happy atmosphere to work in. The power column is a fixed component with 3 power sockets and charging twin USB (A+C), also providing an option for a display bracket or a whiteboard. A low doorstep makes the Framery 2Q wheelchair accessible.

Colors

Exterior



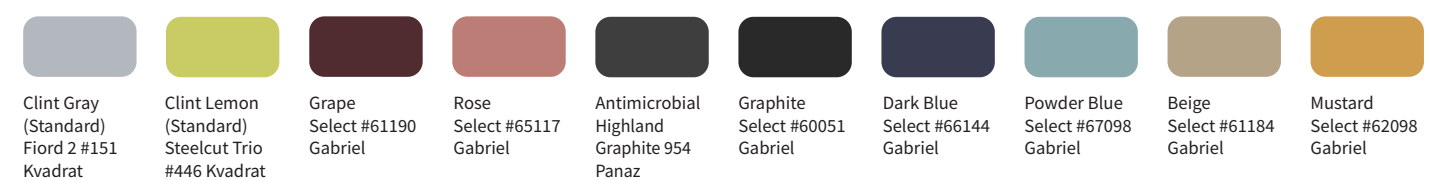
Frame



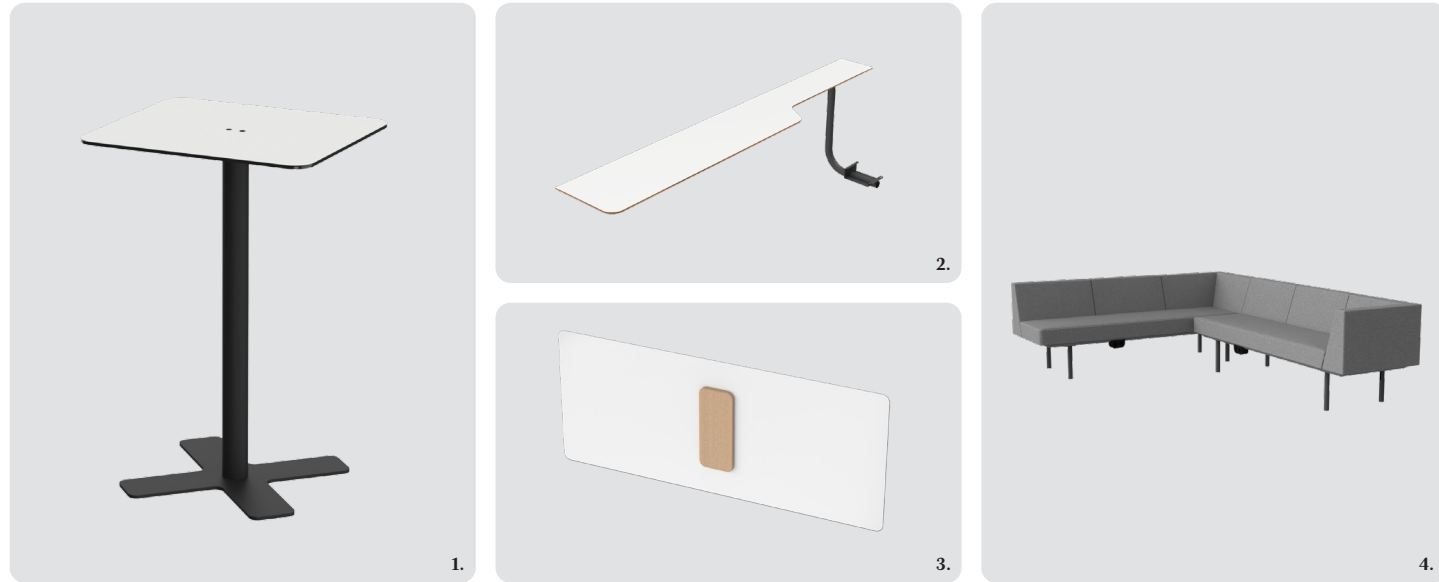
Table



Clint Sofa upholstery



Furniture



1. Piaggio table

and Piaggio Custom-designed Clint Sofa, large whiteboard, free-standing Piaggio table and a wall shelf were designed to create a functional yet relaxed setting for meetings and brainstorming sessions.

2. Lounge shelf

3. Whiteboard

4. Lounge sofa

Certificates



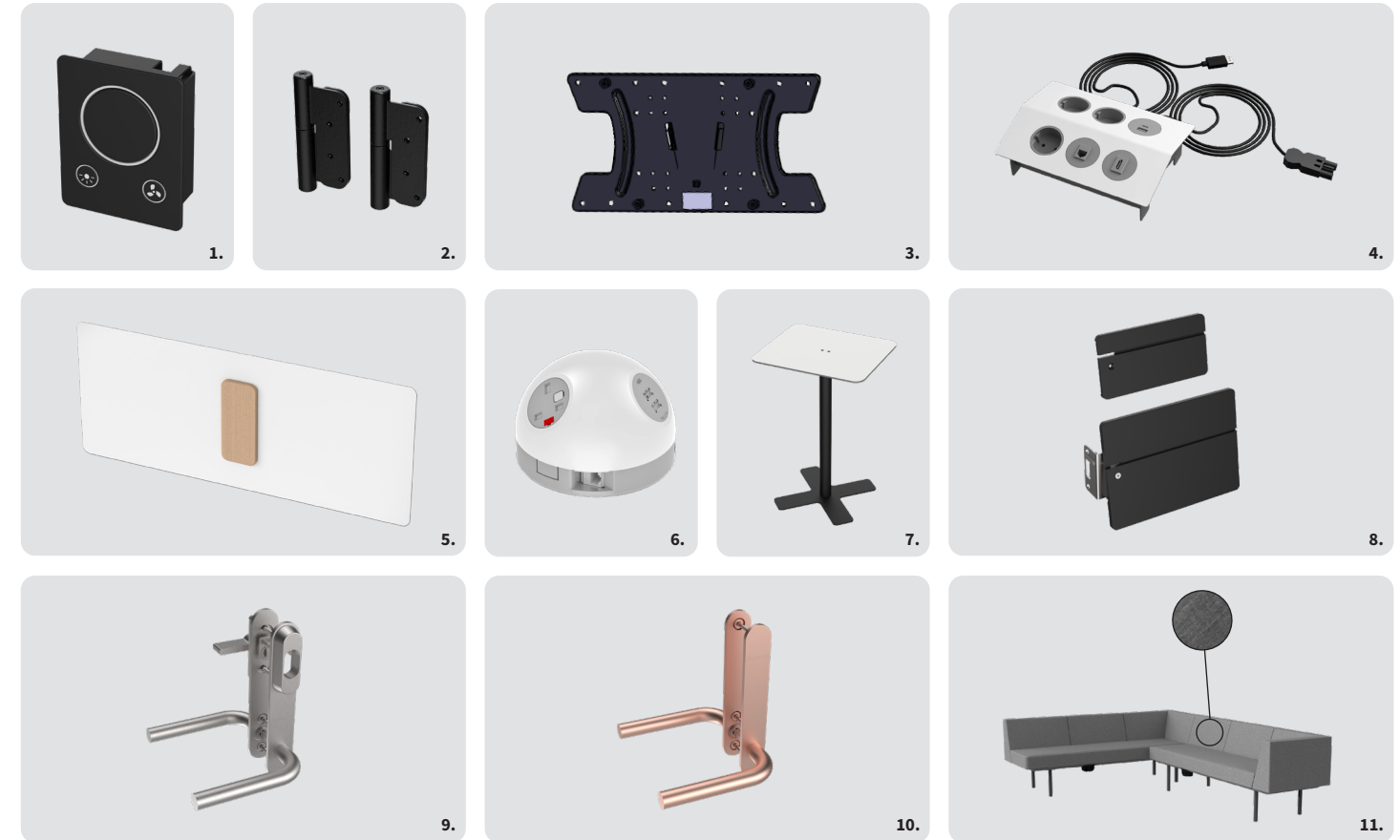
Framery O, Q and 2Q are UL GREENGUARD certified



Framery O, Q, 2Q and One shipped in North America are UL 962 listed



Optional functionalities



Always included

- Control panel for ventilation and lighting** The control panel allows you to adjust ventilation and lighting inside the pod. It is a standard functionality included with all Framery 2Q configurations. For Framery 2Q Huddle and Lounge the control panel is installed on doorway frame; In Framery 2Q Without Furniture the control panel is in the middle column next to back glass.
- Self-closing hinges** are used to make sure the door is not blocking passageways. Self-closing hinges are a type of hinge that has a spring built into it. Available for left-handed door. Self-closing hinges are included as standard on all Framery 2Q configurations. Includes set of black hinges for the door.

Included in Huddle

- Screen bracket** is located on the table wall. It is possible also to mount the bracket on the opposite wall. Option includes mounting plate for the wall, and mounting plate for the screen. Screen is not included. **Screen specifications:** Max. display size 50", Max. weight: 30 kg / 66 lbs, **Vesa support:** 100 x 100, 100 x 150, 150 x 100, 200 x 100, 100 x 200, 200 x 200, 300 x 200, 400 x 200. As an option, compatible with Framery 2Q Lounge and Without Furniture.

- Power outlet** Peak socket is installed on Huddle table. It includes four power, two charging USB (C+A) and a HDMI socket. Optional LAN ports are available (replaces one of the power sockets).

Included in Lounge

- Whiteboard** is attached to either side of the non-glass walls. Dimensions of the whiteboard are 100 cm x 240 cm / 39.4 in x 94.5 in (height, width). Option includes the whiteboard and the cork center. As an option, compatible also with Framery 2Q Huddle and Without Furniture.
- Power outlets** in Framery 2Q Lounge are located under the lounge shelf table and the sofa. There are six power and two charging USB (C+A) sockets. Optional LAN ports are available.
- Piaggio table** is a movable table with tabletop dimensions of 36 cm x 42 cm / 14.2 in x 16.5 in. Table height: 62 cm / 24.4 in. One Piaggio table is included in Framery 2Q Lounge. As an option, additional tables can also be selected. Compatible also with Framery 2Q Without Furniture.

Optional functionalities

- Booking bracket** is a universal booking tablet bracket with a plywood surface attached to the door locking plate. Two sizes available to fit your device. Option includes the bracket and kit required for attachment. Customer acquires the booking tablet and cover for it which is mounted to the bracket. Compatible with all Framery 2Q configurations.
- Smart Lock Compatible** is a kit of parts that allows customer selected smart lock and key to be installed. Compatible with all configurations of Framery 2Q. Option includes kit shown in picture. Smart lock itself is acquired by the customer.
- Copper-plated door handle** Copper has been used for health purposes since ancient times. According to a study by Centers for Disease Control and Prevention (CDC), viruses disintegrate quicker after landing on copper surfaces than on plastic or stainless steel surfaces. Compatible with all configurations of Framery 2Q. Option includes copper-plated door handle.
- Anti-microbial, non-toxic polyester fabric** Anti-microbial, waterproof, bleach cleanable, stain resistant and durable polyester fabric. Our non-toxic material is safe and ISO 10993-5:2009 tested. Compatible with Framery 2Q Lounge.

framery
SERIOUS ABOUT HAPPINESS